

# THE ASHBY

**STARTING AT \$420 000**

## 2 Storey Home

A 2317 sq. ft. home with 4+1 bedrooms and 3+1 bathrooms. The Ashby is the choice to make for a new home. The design is amazingly priced and perfectly accommodates for enlighten living. The Ashby promises for an excellent layout providing a familiar and serene feel. A brilliant layout perfect for any family.

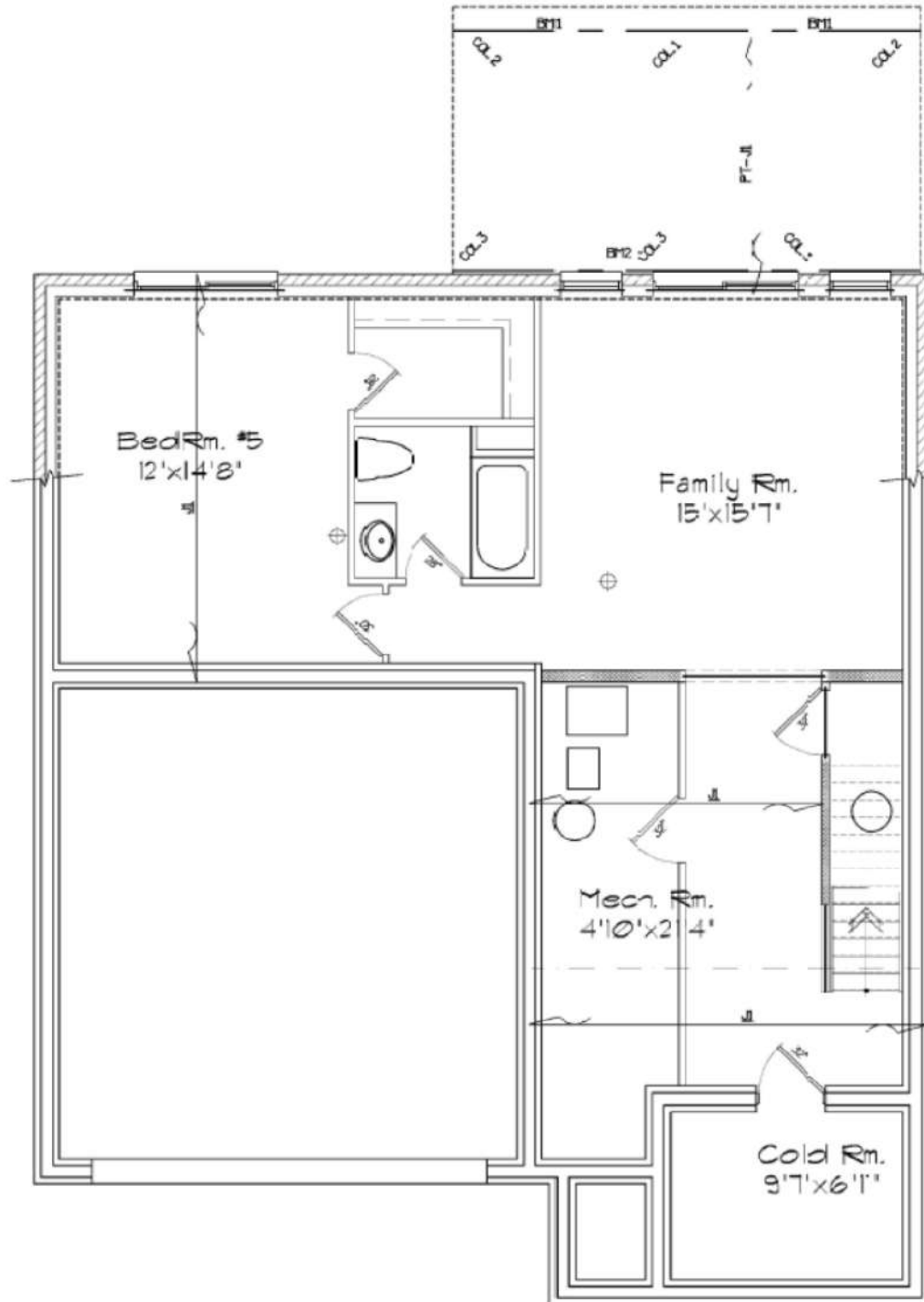
---

### **CONTACT**

PI Homes: 226 376 6569



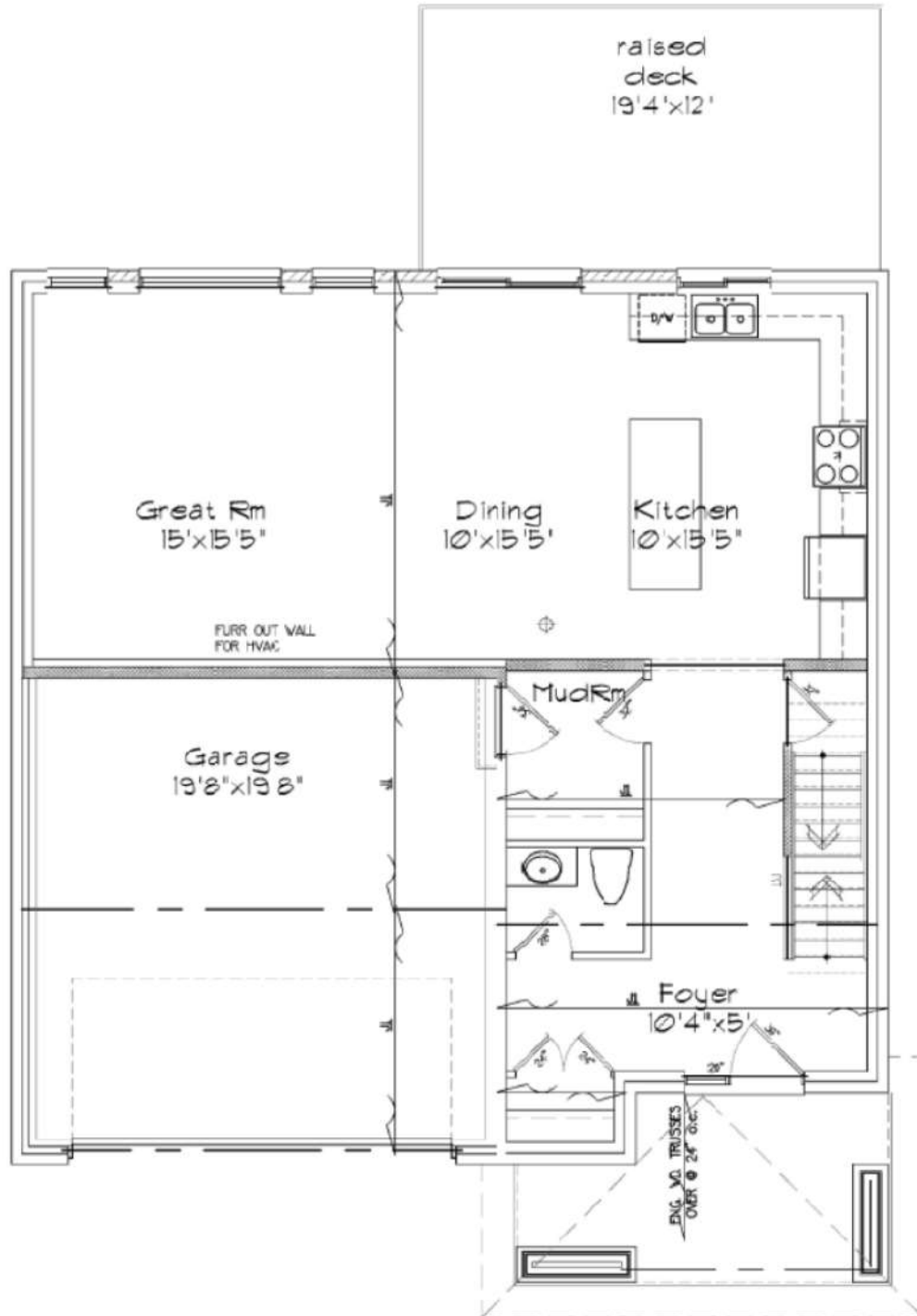
# BASEMENT



**AREA:**

690 sq. ft.

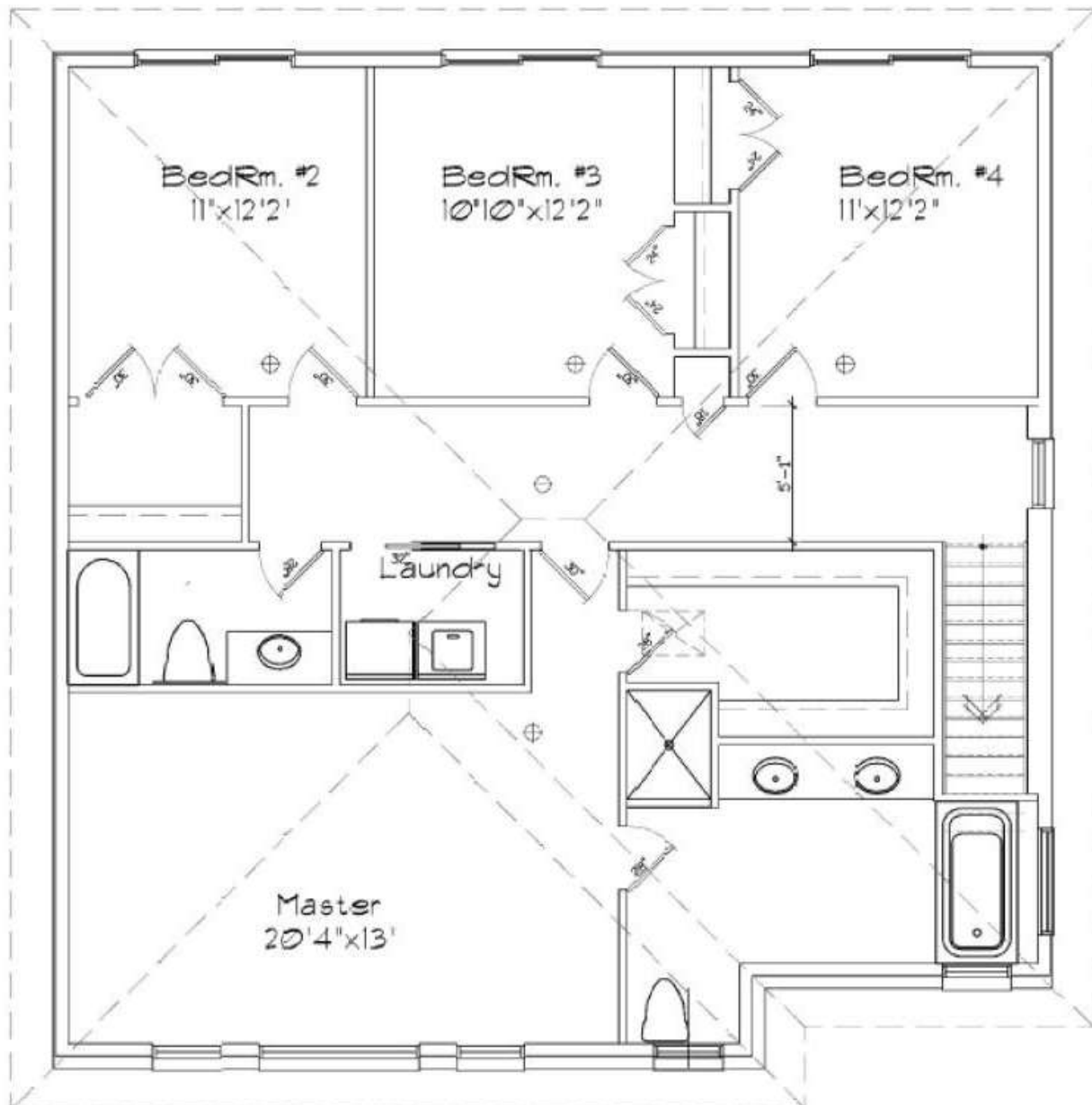
# MAIN FLOOR



**AREA:**

949 sq. ft.

# SECOND FLOOR



**AREA:**

1368 sq. ft.